



Contents lists available at ScienceDirect

# Biochemical and Biophysical Research Communications

journal homepage: [www.elsevier.com/locate/ybbrc](http://www.elsevier.com/locate/ybbrc)

## Leptin reduces Alzheimer's disease-related tau phosphorylation in neuronal cells

Steven J. Greco<sup>a</sup>, Sraboni Sarkar<sup>a</sup>, Jane M. Johnston<sup>a</sup>, Xiongwei Zhu<sup>b</sup>, Bo Su<sup>b</sup>, Gemma Casadesus<sup>c</sup>, J. Wesson Ashford<sup>d</sup>, Mark A. Smith<sup>b</sup>, Nikolaos Tezapsidis<sup>a,\*</sup>

<sup>a</sup> Neuroteq Inc., Bridgewater, NJ, USA

<sup>b</sup> Department of Pathology, Case Western Reserve University, Cleveland, OH, USA

<sup>c</sup> Department of Neurosciences, Case Western Reserve University, Cleveland, OH, USA

<sup>d</sup> Psychiatry and Behavioral Sciences, Stanford University School of Medicine, Stanford, CA, USA

### ARTICLE INFO

#### Article history:

Received 25 August 2008

Available online 16 September 2008

#### Keywords:

Leptin

Tau

Alzheimer's disease

Insulin

AMPK

AICAR

### ABSTRACT

Leptin is a centrally acting hormone controlling metabolic pathways. Recently, it was shown that leptin can reduce amyloid  $\beta$  levels both *in vitro* and *in vivo*. Herein, phosphorylation of tau was investigated following treatment of neuronal cells with leptin and insulin. Specifically, phosphorylation of tau at amino acid residues Ser<sup>202</sup>, Ser<sup>396</sup> and Ser<sup>404</sup> was monitored in retinoic acid induced, human cell lines: SH-SY5Y and NTERA-2. Both hormones induced a concentration- and time-dependent reduction of tau phosphorylation, and were synergistic at suboptimum concentrations. Importantly, leptin was 300-fold more potent than insulin ( $IC_{50}L = 46.9$  nM vs.  $IC_{50}I = 13.8$   $\mu$ M). A central role for AMP-dependent kinase as a mediator of leptin's action is demonstrated by the ability of 5-aminoimidazole-4-carboxamide ribonucleoside (AICAR) to decrease tau phosphorylation, and by blocking leptin in the presence of Compound C. Thus, leptin, which ameliorates both amyloid  $\beta$  and tau-related pathological pathways, holds promise as a novel therapeutic for Alzheimer's disease.

© 2008 Elsevier Inc. All rights reserved.

Alzheimer's disease (AD) is a neurodegenerative disorder of the CNS characterized by distinct pathological hallmarks within the brain. Postmortem examination of AD brains reveals the presence of parenchymal plaques, which consist primarily of the amyloid beta (A $\beta$ ) peptide, and neurofibrillary tangles (NFT), which result from hyperphosphorylation of the microtubule-interacting protein, tau.

Leptin is a peptide hormone synthesized by adipocytes that modulates metabolic energy availability [1], leading to fat storage or mobilization, and that also enhances insulin sensitivity [2]. Leptin achieves this by crossing the blood brain barrier and binding to specific receptors in the hypothalamus mediating appetite and food intake, body weight and energy expenditure [3]. However, a high density of leptin receptors has also been reported in other brain regions, particularly the hippocampus.

Recently, studies have demonstrated that leptin modulates A $\beta$  production and clearance in cell cultures and rodents [4]. Observational studies have shown that a decline of leptin levels is associated with cognitive impairment in the elderly [5]. Also known is that AD patients experience weight loss and a drop in circulating leptin levels [6]. Based on insulin's known effect on tau phosphor-

ylation [7,8], we decided to investigate whether leptin had similar activity, alongside or subsequent to its known effects on A $\beta$  homeostasis [4].

We treated primary neurons and neuronal cell lines with a range of concentrations of leptin and insulin, alone or in combination, and for various times. In all cell types, leptin treatment resulted in reduced phosphorylated tau levels at sites relevant to AD pathology. Moreover, leptin was two orders of magnitude more potent than insulin, as determined by  $IC_{50}$  values.

### Materials and methods

**Reagents and antibodies.** Minimum essential medium (MEM) was purchased from ATCC (Manassas, VA). Neurobasal medium, B27 supplement and L-glutamine were purchased from Gibco (Carlsbad, CA). Trypsin-EDTA and penicillin solution were purchased from MP Biomedicals (Solon, Ohio). Fetal bovine serum (FBS), all-trans retinoic acid (RA), human recombinant leptin and insulin were purchased from Sigma-Aldrich (St. Louis, MO). 5-aminoimidazole-4-carboxamide ribonucleoside (AICAR) was purchased from Cell Signaling Technology (Danvers, MA). Compound C was purchased from EMD Chemicals (Gibbstown, NJ).

Rabbit anti-AMPK $\alpha$  (pThr<sup>172</sup>), -AMPK $\alpha$  (total) and tau (pSer<sup>396</sup>) mAb were purchased from Cell Signaling Technology. Tau mAb

\* Corresponding author. Fax: +1 908 864 8957.

E-mail address: [ntezapsidis@neuroteq.com](mailto:ntezapsidis@neuroteq.com) (N. Tezapsidis).

(clone 5E2) was purchased from Upstate Cell Signaling Solutions (Lake Placid, NY). PHF-tau mAb (clone AT8) was purchased from Pierce Biotechnology (Rockford, IL). PHF-1 mAb was a gift from Dr. Peter Davies, Albert Einstein College of Medicine (Bronx, NY). Rabbit anti-leptin receptor and  $\alpha$ -tubulin mAb were purchased from Affinity BioReagents (Golden, CO). Insulin receptor ( $\beta$ -subunit) mAb was purchased from Millipore (Billerica, MA).

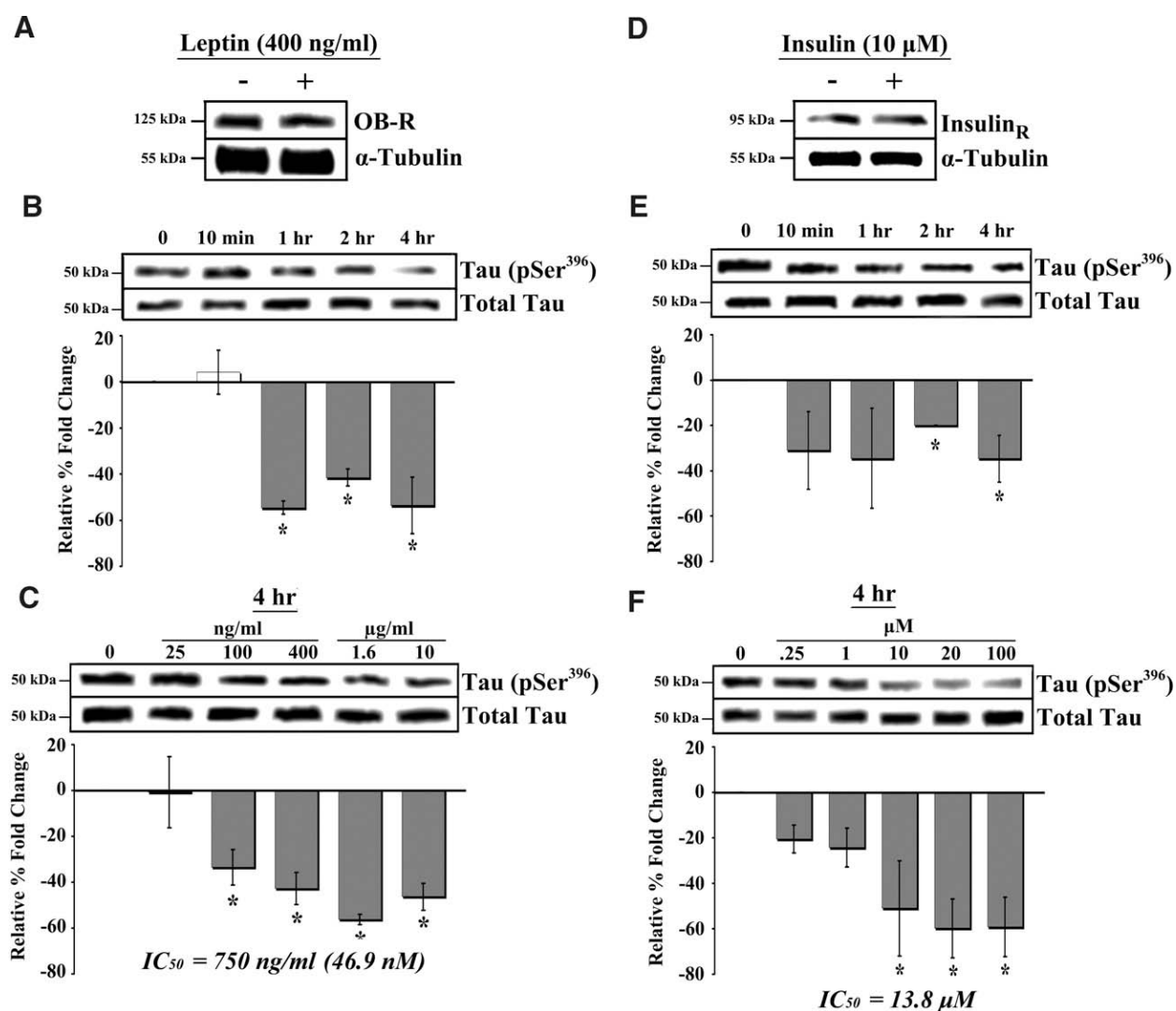
**Culture of cell lines.** Human neuroblastoma, SH-SY5Y, and embryonal carcinoma, NTERA-2 (NT2), cell lines were purchased from ATCC. Cell culture was performed according to manufacturer's specific guidelines. Cells were propagated in MEM containing 10% FBS until 80–90% confluence then detached from the flask by trypsin-EDTA and sub-cultured at a ratio of 1:5.

**Neuronal induction.** SY5Y or NT2 ( $1 \times 10^6$ ) cells were grown in neuronal induction medium (NIM), which consisted of MEM containing 5% FBS supplemented with 10  $\mu$ M RA. SY5Y were grown in NIM for 6 days, and switched to serum-free NIM prior to treat-

ment and harvesting on day 7. Neuronal differentiation of NT2 cells was based on a previously described protocol [9]. Differentiated NT2 cells (NT2N) were switched to serum-free NIM on the day prior to treatment and harvesting.

**Culture of rat primary neurons.** Primary rat cortical neurons were purchased from BrainBits LLC (Springfield, IL), and cultured as per manufacturer's instructions. Briefly, tissues were dispersed and supernatant was transferred to a new tube and centrifuged for 1 min at 1100 rpm. Neurons were then seeded in 6-well plates coated with poly-D-lysine (BD Biosciences; San Jose, CA) and grown in Neurobasal medium supplemented with B27 and 0.5 mM L-glutamine. Medium was changed after 4 days, and at 7 days in culture the neurons were treated and harvested.

**Protein extraction and Western blotting.** Neuronal cells were harvested by scraping. Cell pellets were resuspended in protease and phosphatase inhibitor-supplemented  $1 \times$  RIPA lysis/extraction buffer (Pierce), and then subjected to freeze/thaw cycles in a dry ice/



**Fig. 1.** Time- and dose-dependent dephosphorylation of tau by leptin and insulin in RA-SY5Y. (A) RA-SY5Y were treated with leptin (400 ng/ml) for 4 h, or non-treated (placebo), and analyzed by Western blot using an antibody against OB-R (leptin receptor). Membranes were stripped and re-probed with an antibody against  $\alpha$ -tubulin for normalization. Extracts from cells treated for various (B) times with leptin (400 ng/ml), or (C) concentrations (for 4 h) were prepared and analyzed by Western blot using anti-tau (pSer<sup>396</sup>) antibodies. Membranes were stripped and re-probed with total tau antibody for normalization and analyzed by densitometry. Results are presented as the mean  $\pm$  SD percent fold change, relative to placebo-treated samples, which were arbitrarily assigned a value of 0.  $IC_{50}$  represents the leptin concentration at which tau (pSer<sup>396</sup>) phosphorylation is decreased by 50%. (D) Cells treated with insulin (10  $\mu$ M) for 4 h, or non-treated (placebo), were analyzed by Western blot using an antibody against insulin receptor ( $\beta$ -subunit). Membranes were re-probed with anti- $\alpha$ -tubulin antibodies for normalization. Extracts from cells treated for various (E) times with insulin (10  $\mu$ M), or (F) concentrations (for 4 h) were prepared and analyzed by Western blot using pSer<sup>396</sup> antibodies. Experiments were performed as in B and C, respectively.  $IC_{50}$  represents the insulin concentration at which tau phosphorylation is decreased by 50%. All blots are representative,  $n = 3$ . \*  $p < 0.05$  vs. non-treated.

ethanol bath. Total protein was determined with the Coomassie (Bradford) Protein Assay Kit (Pierce). Whole cell extracts (25 µg) were analyzed by Western blots using 10% SDS-PAGE pre-cast gels (Lonza; Rockland, ME), and the proteins were transferred onto polyvinylidene difluoride membranes (Millipore). Membranes were incubated overnight at 4 °C with primary antibodies and then detected the following day with HRP-conjugated IgG. All primary antibodies, except tau-pSer<sup>396</sup> (1:500), total tau (1:500) and PHF-tau AT8 (1:200), and secondary antibodies were used at final dilutions of 1:1,000 and 1:10,000, respectively. HRP was developed with SuperSignal West Pico Chemiluminescent Substrate (Pierce), and imaged using a BioRad (Hercules, CA) ChemiDoc XRS System. The membranes were stripped with Restore PLUS Western Blot Stripping Buffer (Pierce) for reprobing with other antibodies.

**Statistical analysis.** Statistical data analyses were performed with analysis of variance and Tukey–Kramer multiple comparisons test. Densitometric analyses were performed using the UN-SCAN-IT gel 6.1 software (Silk Scientific; Orem, UT).  $p < 0.05$  was considered statistically significant.

## Results

### Leptin, insulin and tau phosphorylation in RA-induced SY5Y cells

RA induction of the human neuroblastoma cell line, SY5Y, has been reported to increase phosphorylation of tau at AD-related sites [10]. We therefore utilized SY5Y cells induced with retinoic acid (RA-SY5Y) for 7 days as our primary *in vitro* model to investigate the effects of leptin and other treatments on tau phosphorylation.

The first set of studies examined expression of the leptin receptor (OB-R) in RA-SY5Y cells treated with 400 ng/ml leptin or placebo. Both treated and placebo cells were found to express relatively high levels of OB-R, however treatment did not significantly alter receptor expression (Fig. 1A). We next determined whether leptin had an effect on tau phosphorylation. Cells were treated for a range of time periods with 400 ng/ml leptin or placebo, and phosphorylation of tau at Ser<sup>396</sup>, a site which affects the ability of tau to bind microtubules when phosphorylated [11], was measured (Fig. 1B). Significant ( $p < 0.05$ ) decreases in tau (Ser<sup>396</sup>) phosphorylation were observed in cells treated with leptin for 1, 2 or 4 h compared to placebo (Fig. 1B; far right bars). No change in phosphorylation was observed in cells treated with leptin for 24 h compared to 4 h (data not shown).

To determine the dose–response relationship between leptin and tau phosphorylation, RA-SY5Y cells were treated with leptin for 4 h at a range of concentrations (Fig. 1C). We observed a significant ( $p < 0.05$ ) decrease in tau (Ser<sup>396</sup>) phosphorylation in cells treated with 100 ng/ml leptin (Fig. 1C; second bar from left). Decreasing phosphorylation was observed up to a concentration of 1600 ng/ml leptin (second bar from right), which produced the maximal effect. Estimation of the 50% inhibitory concentration (IC<sub>50</sub>) of leptin for tau phosphorylation provided a value of 750 ng/ml, or 46.9 nM.

There is increasing evidence to suggest a link between insulin resistance, diabetes mellitus, impaired glucose tolerance and AD [12]. Several reports have demonstrated that insulin treatment reduces the level of phosphorylated tau in both *in vitro* [7,13] and *in vivo* [8] models. We therefore tested the effect of insulin treatment on tau (Ser<sup>396</sup>) phosphorylation in RA-SY5Y cells and compared it to that of leptin.

Both insulin (10 µM) and placebo-treated cells were found to express high levels of insulin receptor (Fig. 1D). Time-course studies with 10 µM insulin treatment produced significant ( $p < 0.05$ ) decreases in tau (Ser<sup>396</sup>) phosphorylation at 2 and 4 h compared

to placebo controls (Fig. 1E; far right bars). No change in phosphorylation was observed in cells treated with insulin for 24 h compared to 4 h (data not shown). Dose–response studies with 4 h insulin treatment produced a significant ( $p < 0.05$ ) decrease in tau phosphorylation at 10 µM insulin concentration (Fig. 1F; third bar from right). Further, maximum decrease of phosphorylation was observed at a concentration of 20 µM (second bar from right). Estimation of insulin's IC<sub>50</sub> for tau phosphorylation provided a value of 13.8 µM.

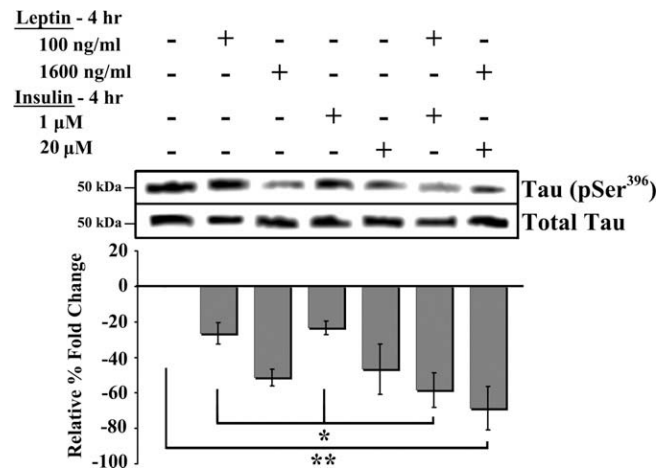
### Combined leptin and insulin treatment and tau phosphorylation

RA-SY5Y cells were treated for 4 h with sub-optimal or maximum effect doses, either in combination or alone, of leptin and/or insulin, and tau (Ser<sup>396</sup>) phosphorylation was measured (Fig. 2). A significant ( $p < 0.05$ ) decrease in phosphorylation was observed in cells treated with sub-optimal combinations of leptin (100 ng/ml) and insulin (1 µM) compared to either treatment alone (Fig. 2; first, third and fifth bars from left). Co-treatment with maximum effect doses of leptin (1600 ng/ml) and insulin (20 µM) produced the most significant ( $p < 0.01$ ) decrease in phosphorylation (first bar from right) compared to placebo-treated. Co-treatment with maximum effect doses of leptin and insulin did not produce a significant ( $p > 0.05$ ) reduction in tau phosphorylation compared to either treatment alone.

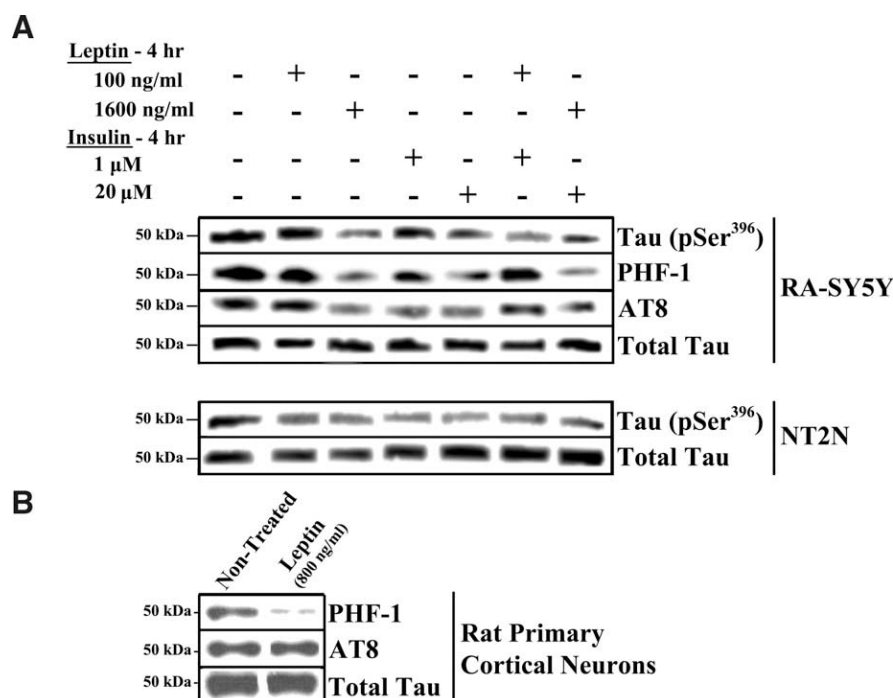
### Tau phosphorylation at other AD-related sites and in other neuronal cultures

In addition to the phosphorylation of tau at Ser<sup>396</sup> (Figs. 1 and 2), other sites within tau known to be phosphorylated in paired helical filaments (PHF) were examined. Specifically, the phosphorylation of tau at Ser<sup>396/404</sup> and Ser<sup>202</sup> was monitored using the PHF-1 and AT8 antibodies, respectively (Fig. 3A, top panel; Table 1). RA-SY5Y cells were treated with leptin and/or insulin as in Fig. 2. Similar effects were observed using the PHF-1 and AT8 antibodies as with pSer<sup>396</sup>. Thus it appears that leptin and insulin can modulate phosphorylation of tau at multiple AD-related sites.

In addition to RA-SY5Y cells, two more neuronal cell types were examined: human NT2 cells, which undergo neuronal differentia-



**Fig. 2.** Combined treatment of leptin and insulin. RA-SY5Y were treated with low or high concentrations of leptin and/or insulin for 4 h, or non-treated (placebo), and analyzed by Western blot with anti-tau (pSer<sup>396</sup>) antibodies. Membranes were stripped and re-probed with anti-tau (total) antibodies for normalization and band densities were analyzed by densitometry. Results are presented as the mean  $\pm$  SD percent fold change, relative to placebo-treated samples, which were arbitrarily assigned a value of 0. Representative blot is shown,  $n = 3$ . \*  $p < 0.05$  vs. group, \*\*  $p < 0.01$  vs. group.



**Fig. 3.** Effect of leptin and insulin on other phospho-epitopes and other neuronal cell types. (A) RA-induced SY5Y and NT2N were treated with low or high concentrations of leptin and/or insulin for 4 h, or non-treated (placebo). (B) Primary rat cortical neurons were treated with leptin for 24 h or placebo. Cell extracts were prepared and analyzed by Western blot with antibodies against specific tau phospho-epitopes (pSer<sup>396</sup>, PHF-1 or AT8). Membranes were stripped and re-probed with antibodies against total tau for normalization. Representative blots are shown,  $n = 3$ .

tion with RA treatment (NT2N), and rat primary cortical neurons. NT2N cells were treated with leptin and/or insulin, and the levels of pSer<sup>396</sup> were measured (Fig. 3A, bottom panel; Table 1). The effects of treatments with insulin alone or in combination with leptin were similar to those seen in RA-SY5Y. For the rat primary neurons, we determined the effect of 24 h leptin treatment on phosphorylation of tau, as detected by PHF-1 and AT8 antibodies (Fig. 3B; Table 1). Leptin (800 ng/ml) produced a significant ( $p < 0.05$ ) decrease in tau phosphorylation, as detected by PHF-1 antibody compared to placebo-treated cells. However, in these cells, leptin was unable to reduce the levels of phosphorylated tau as measured by the AT8 antibody (middle row, far right band).

#### AMPK signaling and tau phosphorylation in RA-SY5Y cells

We next explored the post-receptor binding signaling pathway activated by leptin in modulating tau phosphorylation. The energy homeostasis enzyme, AMP-activated protein kinase (AMPK), has been linked to tau phosphorylation via regulation of mammalian

target of rapamycin (mTOR), PP2A and glycogen synthase kinase-3 $\beta$  (GSK-3 $\beta$ ) [14]. As leptin is known to directly activate AMPK [15], we explored the effect of an AMPK activator (AICAR) on tau phosphorylation and compared it to leptin. In addition, we investigated whether Compound C (inhibitor of AMPK) can block leptin's effect.

Leptin treatment produced a large increase in pThr<sup>172</sup> AMPK $\alpha$  band density (Fig. 4A, top row, middle band), thus demonstrating activation of AMPK $\alpha$ . The leptin effect was specific, since co-treatment with the AMPK inhibitor, Compound C (10  $\mu$ M), abrogated AMPK activation (top row, far right band) as well as tau Ser<sup>396</sup> phosphorylation (second row from bottom, far right band). Treatment with 1 mM AICAR from 10 min to 4 h significantly ( $p < 0.05$ ) decreased Ser<sup>396</sup> phosphorylation compared to placebo (Fig. 4B; gray bars). Dose-response studies with 1 h AICAR treatment produced a significant ( $p < 0.05$ ) decrease in Ser<sup>396</sup> phosphorylation in cells treated with 1 mM AICAR and higher (Fig. 4C; right bars). Estimation of AICAR's IC<sub>50</sub> for tau phosphorylation provided a value of 2.7 mM.

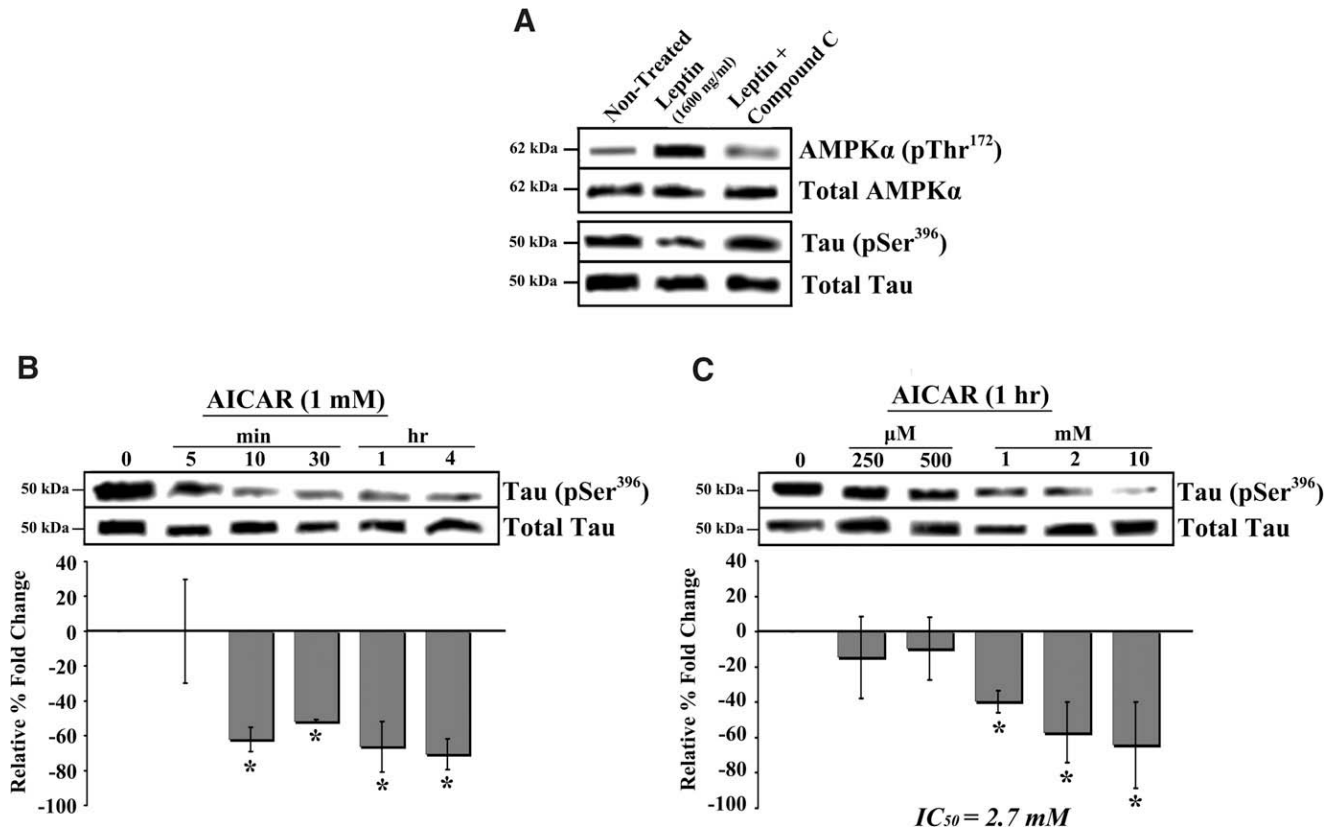
**Table 1**

Tau phosphorylation in leptin- and insulin-treated neuronal cultures

Cell type	Phospho-site	Treatment							
		Non-treated	Leptin 100 ng/ml	Leptin 800 ng/ml	Leptin 1600 ng/ml	Insulin 1 $\mu$ M	Insulin 20 $\mu$ M	Leptin 100 ng/ml + insulin 1 $\mu$ M	Leptin 1600 ng/ml + insulin 20 $\mu$ M
RA-SY5Y	pSer <sup>396</sup>	0	-26 $\pm$ 6*	ND	-51 $\pm$ 5*	-23 $\pm$ 4*	-47 $\pm$ 14*	-58 $\pm$ 10*	-69 $\pm$ 12*
	PHF-1	0	-20 $\pm$ 19	ND	-67 $\pm$ 4*	-37 $\pm$ 11*	-80 $\pm$ 7*	-72 $\pm$ 3*	-84 $\pm$ 6*
	AT8	0	-10 $\pm$ 5	ND	-60 $\pm$ 19*	-40 $\pm$ 13*	-57 $\pm$ 14*	-61 $\pm$ 17*	-66 $\pm$ 21*
NT2N	pSer <sup>396</sup>	0	-27 $\pm$ 6*	ND	-27 $\pm$ 5*	-23 $\pm$ 6*	-53 $\pm$ 10*	-42 $\pm$ 7*	-48 $\pm$ 1*
Rat 1 <sup>o</sup> neuron	PHF-1	0	ND	-75 $\pm$ 18*	ND	ND	ND	ND	ND
	AT8	0	ND	5 $\pm$ 23	ND	ND	ND	ND	ND

Normalized band densities from Fig. 3 were analyzed by densitometry and results are presented as mean  $\pm$  SD percent fold change, relative to non-treated samples, which were arbitrarily assigned a value of 0 (ND, not determined).

\*  $p < 0.05$  vs. non-treated.



**Fig. 4.** Dephosphorylation of tau by AMPK activation in RA-SY5Y. (A) Induced cells were treated with leptin (1600 ng/ml) with or without the AMPK inhibitor Compound C, for 4 h, or non-treated (placebo). Whole cell extracts were prepared and analyzed by Western blot with antibodies against phospho-AMPK $\alpha$  (pThr<sup>172</sup>) and -tau (pSer<sup>396</sup>). Membranes were stripped and re-probed with anti-AMPK $\alpha$  or tau (both total) for normalization. Whole cell extracts from cells treated for various (B) times with AICAR (1 mM), or (C) concentrations (1 h) were prepared and analyzed by Western blot with anti-tau (pSer<sup>396</sup>) antibodies compared to placebo. Membranes were stripped and re-probed with antibodies against total tau for normalization, which were analyzed by densitometry. Results are presented as the mean  $\pm$  SD percent fold change, relative to placebo-treated samples, which were arbitrarily assigned a value of 0. IC<sub>50</sub> represents the AICAR concentration at which tau phosphorylation is decreased by 50%. Representative blots are shown,  $n = 3$ . \* $p < 0.05$  vs. non-treated.

In summary, the results suggest that activation of AMPK $\alpha$  by leptin reduces tau phosphorylation at AD-related sites.

## Discussion

The utilization of the adipocyte-derived hormone, leptin, in models of AD highlight a unique strategy in addressing the potential underlying causes of the sporadic-onset form of the disease [4,16]. Abnormal lipid levels within the brain have been associated with A $\beta$  production and clearance. Increased production of A $\beta$  has been shown to induce hyperphosphorylation of tau, thereby promoting NFT formation [17]. Leptin, which physiologically functions to modulate lipid homeostasis, has been reported to reduce  $\beta$ -secretase activity and A $\beta$  levels *in vitro* [4], and brain A $\beta$  load *in vivo* [4]. Additionally, lower levels of circulating leptin have been observed in AD patients vs. healthy controls [6]. In support, a large prospective study involving 2871 elderly followed over a period of 4 years showed that low leptin levels were associated with a greater cognitive decline [5].

In this study, we investigated whether leptin could have a direct effect on the level of tau phosphorylation at sites known to be hyperphosphorylated in AD. Initially using RA-induced, human SY5Y cells, known to express high levels of phosphorylated tau [10], we confirmed previous studies showing that insulin reduces the level of phosphorylated tau [7,13], which is also in agreement with *in vivo* studies [8]. Insulin was able to reduce phospho-tau (Ser<sup>396</sup>) by 50% at a concentration of 13.8  $\mu$ M. Strikingly, leptin

was 300-fold more potent in this system, being able to achieve the same reduction at a concentration of 46.9 nM (Fig. 1). Insulin is considered a potential therapeutic for AD, thus these findings suggest that leptin may represent an attractive alternative with increased potency.

While the signaling pathways through which insulin mediates its specific effects on tau phosphorylation have been studied extensively [8], similar pathways activated by leptin to modulate tau have not been reported. To explore leptin's post-receptor signaling pathways involved in tau phosphorylation, we focused on the energy homeostasis enzyme AMPK (Fig. 4), known to be modulated by leptin [18,19]. This enzyme is also known to interact with GSK-3 $\beta$  [20], which can potentially phosphorylate all phospho-epitopes studied herein. Activation of AMPK with AICAR produced significant changes in tau phosphorylation within 10 min (Fig. 4). In tissues such as skeletal muscle and liver, leptin stimulates fatty acid oxidation via activation of AMPK [19]. However, within the hypothalamus, leptin has been reported to regulate food intake via inactivation of AMPK [18]. In this study leptin was capable of activating AMPK in SY5Y cells differentiated by retinoic acid. It remains to be determined whether AMPK in hippocampal neurons responds similarly. These findings suggest that CNS neuronal AMPK may provide a novel therapeutic target for reducing AD-related tau phosphorylation.

Current research is elucidating the mechanism of action of leptin to reduce tau phosphorylation. We demonstrated here that activation of AMPK mimics the leptin effect (Fig. 4). This may be linked to the Akt/GSK-3 $\beta$  pathway that modulates tau phosphory-

lation; however, there are many other kinases and phosphatases that regulate tau at various phosphorylation sites [21].

To clearly show the therapeutic value of leptin in treating or preventing NFT formation, *in vivo* experiments are necessary. One approach could involve studies with the triple transgenic mouse model of AD, which develop both plaque and tangle pathology [22]. Validation of our current findings, *in vivo*, would demonstrate leptin's value in selectively targeting both pathologies of AD.

Leptin has been used in clinical trials extensively and has demonstrated an excellent safety profile, even after prolonged treatments. Taken together, our preclinical data demonstrating that leptin ameliorates both A $\beta$  and tau-related pathologies, along with its pharmacological profile, support its use as a novel therapeutic for Alzheimer's disease.

### Acknowledgments

This work was supported by the National Institute on Aging (SBIR-1R43AG029670) and the New Jersey Commission on Science and Technology.

### References

- [1] M.W. Schwartz, S.C. Woods, D. Porte Jr., R.J. Seeley, D.G. Baskin, Central nervous system control of food intake, *Nature* 404 (2000) 661–671.
- [2] I. Shimomura, R.E. Hammer, S. Ikemoto, M.S. Brown, J.L. Goldstein, Leptin reverses insulin resistance and diabetes mellitus in mice with congenital lipodystrophy, *Nature* 401 (1999) 73–76.
- [3] E. Jequier, Leptin signaling, adiposity, and energy balance, *Ann. NY Acad. Sci.* 967 (2002) 379–388.
- [4] D.C. Fewlass, K. Noboa, F.X. Pi-Sunyer, J.M. Johnston, S.D. Yan, N. Tezapsidis, Obesity-related leptin regulates Alzheimer's Abeta, *FASEB J.* 18 (2004) 1870–1878.
- [5] K.F. Holden, K. Lindquist, F.A. Tylavsky, C. Rosano, T.B. Harris, K. Yaffe, Serum leptin level and cognition in the elderly: findings from the health ABC study, *Neurobiol. Aging* (2008), doi:10.1016/j.neurobiolaging.2007.11.024.
- [6] D.A. Power, J. Noel, R. Collins, D. O'Neill, Circulating leptin levels and weight loss in Alzheimer's disease patients, *Dement. Geriatr. Cogn. Disord.* 12 (2001) 167–170.
- [7] M. Lesort, R.S. Jope, G.V. Johnson, Insulin transiently increases tau phosphorylation: involvement of glycogen synthase kinase-3 $\beta$  and Fyn tyrosine kinase, *J. Neurochem.* 72 (1999) 576–584.
- [8] E. Planel, Y. Tatebayashi, T. Miyasaka, L. Liu, L. Wang, M. Herman, W.H. Yu, J.A. Luchsinger, B. Wadzinski, K.E. Duff, A. Takashima, Insulin dysfunction induces *in vivo* tau hyperphosphorylation through distinct mechanisms, *J. Neurosci.* 27 (2007) 13635–13648.
- [9] P.W. Andrews, Retinoic acid induces neuronal differentiation of a cloned human embryonal carcinoma cell line *in vitro*, *Dev. Biol.* 103 (1984) 285–293.
- [10] A. Jamsa, K. Hasslund, R.F. Cowburn, A. Backstrom, M. Vasange, The retinoic acid and brain-derived neurotrophic factor differentiated SH-SY5Y cell line as a model for Alzheimer's disease-like tau phosphorylation, *Biochem. Biophys. Res. Commun.* 319 (2004) 993–1000.
- [11] D.B. Evans, K.B. Rank, K. Bhattacharya, D.R. Thomsen, M.E. Gurney, S.K. Sharma, Tau phosphorylation at serine 396 and serine 404 by human recombinant tau protein kinase II inhibits tau's ability to promote microtubule assembly, *J. Biol. Chem.* 275 (2000) 24977–24983.
- [12] L. Gasparini, W.J. Netzer, P. Greengard, H. Xu, Does insulin dysfunction play a role in Alzheimer's disease?, *Trends Pharmacol. Sci.* 23 (2002) 288–293.
- [13] M. Hong, V.M. Lee, Insulin and insulin-like growth factor-1 regulate tau phosphorylation in cultured human neurons, *J. Biol. Chem.* 272 (1997) 19547–19553.
- [14] V. Meske, F. Albert, T.G. Ohm, Coupling of mammalian target of rapamycin with phosphoinositide 3-kinase signaling pathway regulates protein phosphatase 2A- and glycogen synthase kinase-3-dependent phosphorylation of Tau, *J. Biol. Chem.* 283 (2008) 100–109.
- [15] S. Uotani, T. Abe, Y. Yamaguchi, Leptin activates AMP-activated protein kinase in hepatic cells via a JAK2-dependent pathway, *Biochem. Biophys. Res. Commun.* 351 (2006) 171–175.
- [16] A.P. Signore, F. Zhang, Z. Weng, Y. Gao, J. Chen, Leptin neuroprotection in the CNS: mechanisms and therapeutic potentials, *J. Neurochem.* 106 (2008) 1977–1990.
- [17] R. Resende, E. Ferreira, C. Pereira, C.R. Oliveira, ER stress is involved in Abeta-induced GSK-3 $\beta$  activation and tau phosphorylation, *J. Neurosci. Res.* 86 (2008) 2091–2099.
- [18] Y. Minokoshi, T. Alquier, N. Furukawa, Y.B. Kim, A. Lee, B. Xue, J. Mu, F. Foufelle, P. Ferre, M.J. Birnbaum, B.J. Stuck, B.B. Kahn, AMP-kinase regulates food intake by responding to hormonal and nutrient signals in the hypothalamus, *Nature* 428 (2004) 569–574.
- [19] Y. Minokoshi, Y.B. Kim, O.D. Peroni, L.G. Fryer, C. Muller, D. Carling, B.B. Kahn, Leptin stimulates fatty-acid oxidation by activating AMP-activated protein kinase, *Nature* 415 (2002) 339–343.
- [20] K. Inoki, H. Ouyang, T. Zhu, C. Lindvall, Y. Wang, X. Zhang, Q. Yang, C. Bennett, Y. Harada, K. Stankunas, C.Y. Wang, X. He, O.A. MacDougald, M. You, B.O. Williams, K.L. Guan, TSC2 integrates Wnt and energy signals via a coordinated phosphorylation by AMPK and GSK3 to regulate cell growth, *Cell* 126 (2006) 955–968.
- [21] F. Liu, B. Li, E.J. Tung, I. Grundke-Iqbal, K. Iqbal, C.X. Gong, Site-specific effects of tau phosphorylation on its microtubule assembly activity and self-aggregation, *Eur. J. Neurosci.* 26 (2007) 3429–3436.
- [22] S. Oddo, A. Caccamo, J.D. Shepherd, M.P. Murphy, T.E. Golde, R. Kaye, R. Metherate, M.P. Mattson, Y. Akbari, F.M. LaFerla, Triple-transgenic model of Alzheimer's disease with plaques and tangles: intracellular Abeta and synaptic dysfunction, *Neuron* 39 (2003) 409–421.